

Benefits

- High resolution **scalability** covers full range of hospital demands
- Improved **ergonomics** during surgery - flexible video placement on every video monitor
- Efficient and convenient **collaboration, mentoring and teaching** via video over IP option due to availability of the live video everywhere within and even beyond the hospital*
- Workflow oriented** patient documentation as well as **reporting** of the surgical procedure
- Centralized touch screen control from the sterile and non-sterile field
- High **compatibility** allows connection of all different video source and destination types (standard and high definition)
- Compatibility with control unit for endosurgery, UCES-3, allows for even more **flexible and dynamic control** of the entire OR
- Supports **Scene Selection** in combination with UCES-3: One touch selection of OR settings improves the workflow according to procedure progress and facilitates **standardization** of surgery settings

* Video streaming solution required



VMC-10 with VMR-10



VMC-30

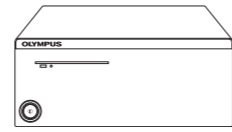
Video Inputs/Outputs	VMC-10 with VMR-10	VMC-30
Room Camera Control	yes	yes
Video Conference over IP	yes	yes
Room Light Control	yes	yes
iPod Control	yes	yes
Patient Documentation	yes	yes
Compatibility with UCES-3, control unit for endosurgery	yes	yes
Video Streaming over Hospital LAN	yes	yes
Loud Speakers	2 Mono	4 Stereo
Microphone	DECT Wireless	UHF Wireless
Aux In	-	1
Mic In	-	1
Telephone	-	yes
Advanced Echo Cancelling	-	yes

Available Languages:

Chinese, Danish, Dutch, English, Estonian, Finnish, French, German, Greek, Italian, Korean, Portuguese (Brazil), Portuguese (Portugal), Russian, Spanish, Swedish

Control Units

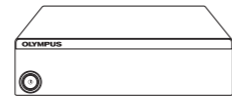
WD15010A Control Unit "VMC-10"



Includes:
Control Unit, software license key for workflow and documentation software, iPod docking station incl. power supply, system cable to connect docking station, room camera incl. signal converter and power supply, wireless microphone (DECT), CAT5 signal converter for touch screen, Instruction for use

WD15011A HD expansion unit "VMR-10"

Including system cable for connection to VMC-10, Instruction for use

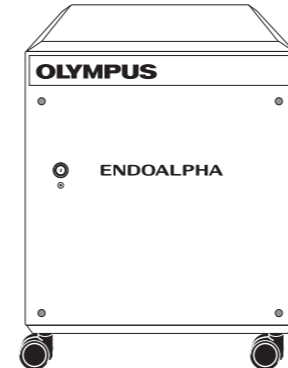


Control Units (cont.)

WD15030A Control Unit "VMC-30", Frequency Range A

WD15030D Control Unit "VMC-30", Frequency Range D

WD15030E Control Unit "VMC-30", Frequency Range E



Includes:
Control Unit, software license key for workflow and documentation software, IW-22 Wall mountable iPod docking station, controllable room camera incl. cable (mini-DIN), Environ. Lights insulation kit, UHF wireless microphone receiver incl. headset, CAT5 Signal converter for touch screen, DVI fiber extender receiver, instruction manuals

Video Streaming License

WD15020A Software, IP Video Streaming License, for "VMC-10" and "VMC-30"
Software license for "VMC-10" and "VMC-30" to enable control of external video codecs for image transmission via IP. VMC acts as client in a client-server network of Image Distribution Software "EA-VID"

Cables and Connectors

WD15071A Cable (6 m) to connect control unit to (optional) SONY room camera (VISCA) for zoom and pan control, for VMC-10/VMC-30

WD15072A Cable (6 m) to connect control unit to external sound amplifier, for VMC-10/VMC-30

WD15073A Cable (6 m) to connect control unit to external light box for control of two light circuits, for VMC-10/VMC-30

WD15074A Remote cable (1.5 m) for control of still image and video capturing, for CV-165/180/OTV-S190, designed for use in combination with UCES control unit

WD15075A Remote cable (15 m) for control of still image and video capturing, for CV-165/180/OTV-S190, designed for use in combination with UCES control unit

WD15076A Remote cable (1.5 m) for control of still image and video capturing and patient data synchronization, for CV-165/180/190, cannot be used in combination with UCES control unit

WD15077A Remote cable (15 m) for control of still image and video capturing and patient data synchronization, for CV-165/180/190, cannot be used in combination with UCES control unit

WD15078A System cable (1.5 m) for integration of UCES control unit, for VMC-10/VMC-30

WD15079A System cable (15 m) for integration of UCES control unit, for VMC-10/VMC-30

WD15080A Adapter-Kit for connecting a second touch panel to one VMC, including brackets for tech-panel mounting

WD15081A Adapter-Kit for connecting a second touch panel to one VMC, including brackets for tech-panel mounting and docking station for iPod

iPod is a trademark of Apple Inc., registered in the U.S. and other countries.
Olympus and ENDOALPHA are trademarks or registered trademarks of Olympus Corporation, Olympus America Inc., and/or their affiliates. Specifications, design, and accessories are subject to change without any notice or obligation on the part of the manufacturer.

OLYMPUS

OLYMPUS SINGAPORE PTE LTD. 491B, River Valley Road #12-01/04 Valley Point Office Tower, Singapore 248373, Singapore

OLYMPUS KOREA CO., LTD. Olympus-Tower, 114-9 Samseong-Dong, Gangnam-Gu, Seoul, 135-090 Korea

OLYMPUS (THAILAND) CO., LTD. 159 Serm-Mit Tower, 9th Floor, Unit #906-910, Sukhumvit 21 Road, North Klongtoey, Wattana, Bangkok 10110, Thailand

OLYMPUS (BEIJING) SALES & SERVICE, CO., LTD. A8F, Ping An International Financial Center, No. 1-3, Xinyuan South Road, Chaoyang District, Beijing, 100027 P.R.C.

OLYMPUS HONG KONG AND CHINA LIMITED L43, Office Tower, Langham Place, 8 Argyle Street, Mongkok, Kowloon, Hong Kong, China

OLYMPUS MEDICAL SYSTEMS INDIA PRIVATE LIMITED 102-B Time Tower M.G. Road Gurgaon 122001 Haryana., India

OLYMPUS AUSTRALIA PTY. LTD. 31 Gilby Road, Mt. Waverly VIC 3149, Australia

OLYMPUS NEW ZEALAND LIMITED 15d Paul Matthews Road, Albany, Auckland, New Zealand 1330

ENDOALPHA CONTROL AND VIDEO MANAGEMENT VMC CONTROL UNITS

All-in-one: Centralized control of video management, communication, documentation and audio from the sterile and non-sterile field



INCREASED EFFICIENCY DURING SURGERY

The Olympus Integrated OR solutions facilitate streamlined workflows and improved ergonomics

The VMC family focuses on centralized touch screen control of - video management - video network functionalities* - communication - procedure documentation and reporting - ambient light control - music (iPod control).

To provide maximum flexibility for the OR staff, the VMC control units can be operated from both the sterile and non-sterile field. The intuitive navigation supports easy system management and helps to reduce training times.

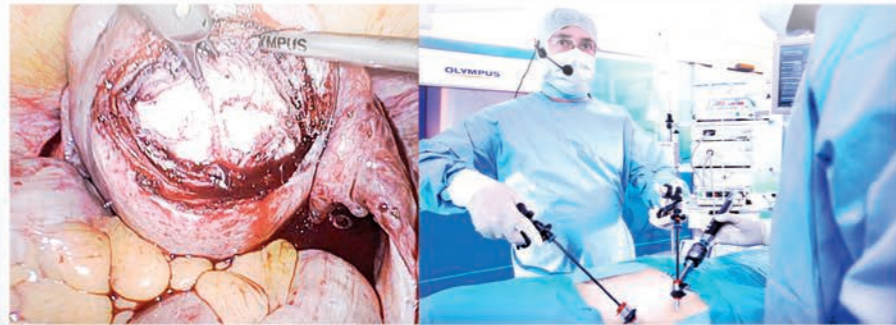
* Video streaming solution required

Features

- Placement of all live videos on any monitor inside the OR
- Optional video streaming capability to link procedure videos to the hospital network or even beyond*
- Initiating and capturing recordings to the hard disk or network storage
- Changing room light settings
- Playback of iPod music
- Performing video conferencing and phone calls
- Controlling a room camera

Any VMC control unit can be combined with other ENDOALPHA solutions to widen the scope of functionalities and allow further improvements:

- Control unit for endosurgery, UCES-3, to expand the centralized control of the entire OR and increase independence from non-sterile staff
- ENDOBASE Server for connection to the hospital's documentation and archiving system via HL7 or DICOM
- Olympus video streaming solution in order to enable high quality live video transmissions via the hospital's IT network.



Functional Description VMC-10 / VMR-10

All aspects of the system are designed to be operated via an intuitive touch screen user interface. Up to two touch screens can be connected to provide control from the sterile and non-sterile field.

Video and VoIP Communication

Network-based video and telephone-conferencing enables cross-departmental collaboration and conferences.

Connectivity	IP network, using SIP or H.323
Video Frame Rate	Up to 30 Frames/s
Video Resolution	Up to 704 x 576 (4CIF)
Video Standard	H.261, H.263
Audio Codecs	G.722, G711

Room Camera Unit

A wall-mountable camera unit is included.

Image Sensor	1/4 CCD
Effective Pixels	752 x 582
Lens	2.5 mm Fixed Focal
SNR	50 dB

Video Placement

Video signals such as endoscopic cameras, room cameras, recording or other imaging devices can be assigned to different display destinations inside the operating theatre.

VMC-10	8x 8 Y/C (S-Video)
VMR-10	6x 5 HD-SDI

Documentation

Videos can be recorded and linked to patient data automatically for reference documentation and archiving

Workflow oriented procedure documentation and reporting

Available as stand-alone or network client solution

Trigger video documentation functions directly from the endoscope or via foot switch

Still image capturing and video recording (SD & HD)

CD/DVD recording

Import and export of images/videos

Video editing

Hospital IT compatibility via DICOM and HL7

Ambient Light Control

Different ambient light zones and light scenes are recalled according to procedure situations.

Voltage	0 – 10 V~
Channels	Two channels: white and blue

iPod and Audio Control

Ambient music is controllable for a stress-free and effective work atmosphere.

iPod control via touch screen

Connections for 2 Mono Speakers

Rack Dimensions

Units are designed for placing them on supply units in the ORs.

	VMC	VMR
Width	370 mm	
Height	150 mm	100 mm
Depth	740 mm	
Weight	15.8 kg	8.6 kg



VMR-10
VMC-10

Functional Description VMC-30

All aspects of the system are designed to be operated via an intuitive touch screen user interface.

Video and VoIP Communication

Network-based video and telephone-conferencing enables cross-departmental collaboration and conferences.

Connectivity	IP network, using SIP or H.323
Video Frame Rate	Up to 30 Frames/s
Video Resolution	Up to 704 x 576 (4CIF)
Video Standard	H.261, H.263
Audio Codecs	G.722, G711

Room Camera Unit

A touch screen-controllable, ceiling-mountable zoom/pan camera is included.

1/4 type 380k pixel EXview HAD CCD

Wide Range Pan/Tilt: 340 degrees Pan / 120 degrees Tilt

High Zoom Ratio AF Lens: 18x Optical + 12x Digital

Minimum illumination less than 1 Lux

Auto Focus

Video Placement

Video signals such as endoscopic cameras, room cameras, recording or other imaging devices can be assigned to any display, regardless of signal type.

Analogue	4x 2, each either Y/C or Composite
SDI	9x 10 HD-SDI
DVI / VGA	2x

1 DVI Fiber out, receiver included

Documentation

Videos can be recorded and linked to patient data automatically for reference documentation and archiving

Workflow oriented procedure documentation and reporting

Available as stand-alone or network client solution

Trigger video documentation functions directly from the endoscope or via foot switch

Still image capturing and video recording (SD & HD)

CD/DVD recording

Import and export of images/videos

Video editing

Hospital IT compatibility via DICOM and HL7

Ambient Light Control

Different ambient light zones and light scenes are recalled according to procedure situations.

Voltage	0 – 10 V~
Channels	Two channels: white and blue

Audio Control

Control of connected iPod for selecting music via touch screen. Alternatively – or in addition – a second audio device can be connected for playback. In addition to built-in microphone a second microphone can be connected.

iPod control via touch screen

Additional Aux-in (Line Level)

Additional Mic-in (Mic Level)

4 Stereo Loud speakers

Rack Dimensions and Technical Data

System is designed to be placed either inside the OR, or in a technical room outside.

	VMC
Width	600 mm
Height	660 mm
Depth	600 mm
Weight	83 kg
Voltage	100 – 240 V~
Frequency	50 – 60 Hz



VMC-30